

CT24102

Power Switch w/ OVC on 65n

Status

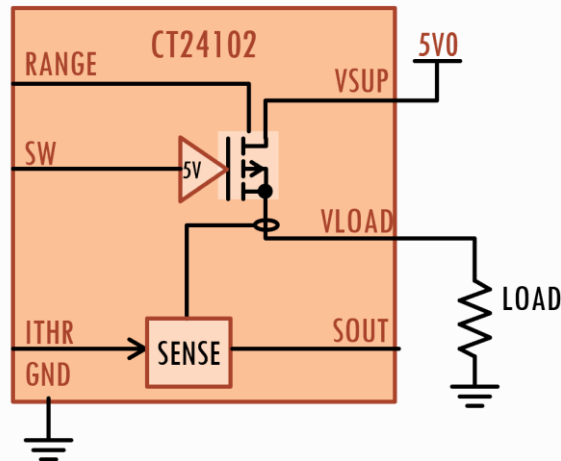
- Silicon Proven on TSMC 65n 5V-CMOS
- Easy portability

Deliverables

- Datasheet
- Integration guidelines
- Test Specifications
- GDS2 and LVS Netlist
- Footprint (.LEF)

Applications

- Power Supply Manager



Features

- 65nm - 5V Option Process
- Operating Voltage: 2.5V
- Switching Voltage: 5V
- Switching Max Current: 400mA
- Integrated low ohmic Switch
- Programmable Over Current Protection
- Integrated ESD Protection

Description

CT24102 is a specialized 5V power supply switch with integrated over current protection.

Current Protection threshold is programmable through a dedicated input pin. To allow small current threshold with good accuracy, the switch size can be selected between two values.